

SRQTM

VIBRANT LIVING ON THE CREATIVE COAST SARASOTA | BRADENTON

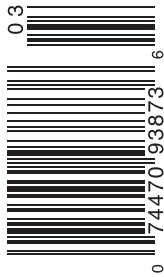
HOME OF THE YEAR

MEET THIS YEAR'S COMPETITION WINNERS



MAR 2014

\$4.00 US \$5.00 CAN



03
74470-93873 6
HOME OF THE YEAR / SRQMAG.COM

2014 Home of the Year

Recognizing this year's winners and finalists:

DSDG, Inc. Architects

DTI Contracting

DWY Landscape Architects

Euro Tech Cabinetry

Halflants and Pichette

Josh Wynne

Michael A. Gilkey

Murray Homes

SAWA Design Studio

Leader Design Studio

Synergy Building

The Schimberg Group

Traction Architecture

THE VISION OF ARCHITECTS, BUILDERS, INTERIOR DESIGNERS AND LANDSCAPE PROFESSIONALS CREATE RESIDENTIAL SPACES WITH STRIKING CHARACTER. SRQ MAGAZINE'S ANNUAL HOME OF THE YEAR COMPETITION RECOGNIZES THE BEST OF THE BEST. DISCOVER HOW CREATIVITY, INTEGRITY, FORM AND FUNCTION CONVERGE TO BRING THESE TREASURED HOMES ALIVE.

Competition coordinated by Jay McManemon.





2014 BEST OVERALL HOME/
OVER \$2 MILLION

PLATINUM

JUDGE COMMENT
"Beautifully executed. Love the relationship of fenestration to landscape."



PRIVATE PALACE **DSDG, INC. ARCHITECTS**

This multiple story residence situated on an odd shaped, heavily wooded, one-acre lot was designed to give the client as much privacy as possible, while also keeping the view of the surrounding mature vegetation and bayou open. The floor plates grow each level they go up, with a slight angle of the exterior columns, allowing the front of the house to have a sunshade, while the rear allows for more outdoor covered space on the second story to enjoy the view and outdoor living. The view from the street is relatively closed off, with tall narrow windows to allow for light into the space but also allow for privacy from the street. Once you enter the house, a clear water reflection pool leads your eye to the bayou behind the residence. The large sliding glass doors and clerestory windows atop the stairwell fill the house with natural light. The rich new vegetation blends the new with the old to make for a continuous lush landscape that accents the architecture. The large pool reaches out towards the bayou and brings the landscaping and the architecture together. The central great room is comprised of the kitchen, living and dining rooms with a unique rotating orb-shaped fireplace that can be viewed from any of the surrounding spaces. The corner floor-to-ceiling glass walls move apart to really open the space to the natural view of the water and to bring nature into the house. This two-story 3,300 square foot house has four bedrooms, four and a half bathrooms and is inviting and peaceful to both the owners and guests. **Architect:** Mark E. Sultana, AIA, NCARB. **Builder:** Voigt Brothers Construction. **Interior Designer:** Pam Holladay. **Landscape Designer:** Timothy Borden. **Photography by:** Detlev Von Kessel.

2014 BEST OVERALL HOME/
OVER \$2 MILLION

GOLD

PANSY BAYOU CONTEMPORARY **MURRAY HOMES**

This stunning, coastal contemporary house located on Pansy Bayou and within walking distance of St. Armands Circle presents the finest in island living. This elegant four bedroom, six and a half bathroom home was designed by local architect Cliff Scholz of CMSA and built by custom homebuilder Murray Homes. The owners wanted to create a home that would be comfortable and manageable for them for day to day living, but that would seamlessly transition into a space large enough to accommodate a growing family of grandchildren. With this in mind, the house has two laundry rooms, a separate guest suite with a bedroom, a Murphy bed, entertainment area and kitchenette, a study, a fully detailed exercise room and a complete media room. There is over 1,500 square feet of outside living area with an outdoor fireplace and kitchen, from which to enjoy the peaceful views across Pansy Bayou and the wildlife preserve beyond. Spanning three original 50 foot wide lots, the facade of this 5,500 square-foot home displays crisp lines and a uniform symmetry typical of the British style of architecture that influences much of the West Indies. The metal roof offers clean, casual elegance, whilst the shutters, cypress tongue and groove ceilings and landscape project a more formal feel. Both the architect and the builder were careful not to make the house out of proportion with the surrounding neighborhood. Time and consideration were given to the landscape and hardscape plans, and included a property line wall and gate system to give an estate feel and provide additional security. The home was built to withstand Mother Nature's wrath, with Marvin impact windows, poured solid upper decks and high efficiency cooling systems engineered throughout. The interior finishes offer beautiful 5-inch solid maple floors, stunning bathrooms and a fully appointed chef's kitchen, pantry and bar. The use of reclaimed timber above the mantelpiece plays subtle homage to the coastal design without taking away from the overall elegance and clean lines of this extremely livable house. **Builder:** Murray Homes. **Architect:** Clifford Scholz. **Interior Designer:** Sally Stover. **Photography:** Mark Borosch.

JUDGE COMMENT "This project is original in form, adding freshness to a traditional salt box concept. There is a quality of views without having an all-glass building"





SILVER

MANASOTA JEWEL **SYNERGY BUILDING**

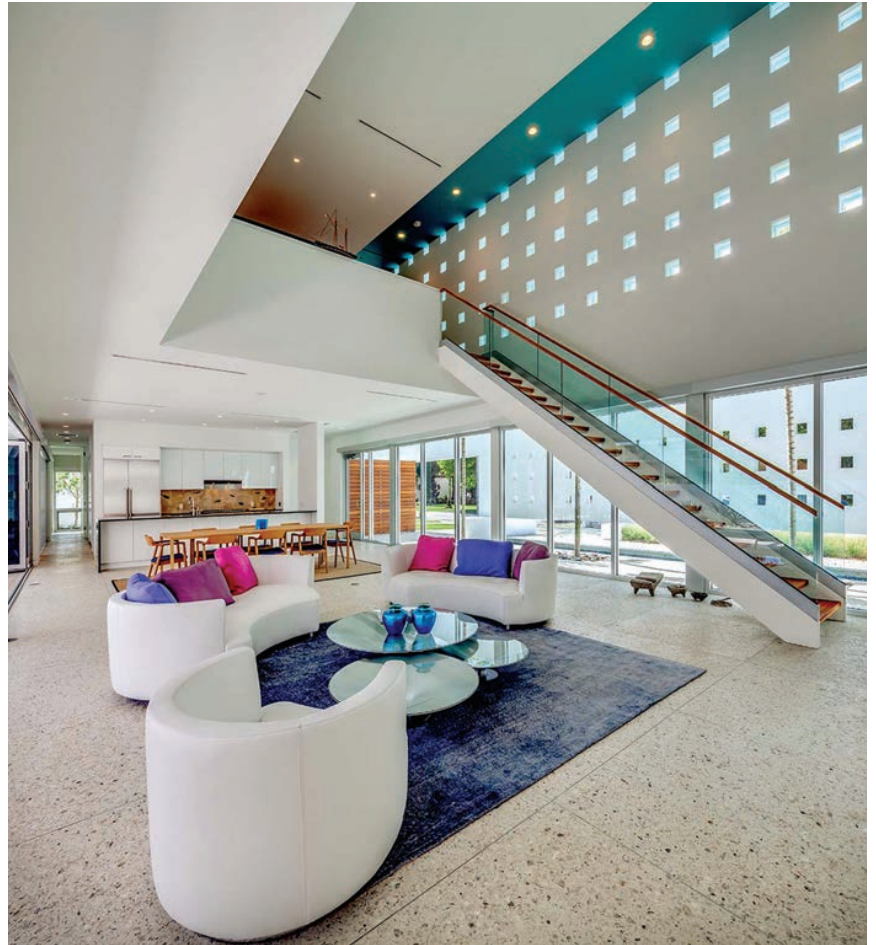
The Manasota Key Beach House is a home nestled in the center of a coastal hammock on a little over an acre on the bay side of Manasota Key. The home is hidden behind old Florida mature oaks that are hard to find in today's Sarasota. The Manasota Key Beach House is the largest home to achieve the LEED Platinum certification by the USGBC in Sarasota with this residential project consuming 9,600 square feet. The home has many hidden solar panels that generate enough energy along with the homes system designs to reduce the energy use to almost zero for 9,600 square feet. This home not only achieved LEED Platinum, but has achieved a few other third party certifications such as Energy Star Home Certification, the EPA (Environmental Protection Agency) Indoor AirPlus Certification, Florida Water Star Gold Certification, Florida Yards and Neighborhoods Certification and the Florida Green Building Coalition Platinum Certification. **Architect:** A Phipps Design. **Builder:** Synergy Building. **Interior Designer:** Deeia M. Topp. **Photography by:** Greg Wilson

JUDGE COMMENT "It is an unusual collection of masses . . . Exterior and interior create a well integrated style"

2014 BEST OVERALL HOME/
UNDER \$2 MILLION

JUDGE COMMENT "This is my favorite work. The boldness of the massing and the use of color. The selection of materials is very thoughtful and appropriate . . . Exquisite. Thorough, thoughtful, beautiful, livable."

PLATINUM



SPENCER HOUSE DTI CONTRACTING

Located in an established neighborhood on a busy street corner, this house is designed to create privacy from the street and provide outdoor living from within the walls of the project. These outdoor spaces occur both on the ground plane and vertically within the structure. Carefully placed openings (outdoor room projections and view portals) offer selected views of the neighborhood. The house is essentially two pieces, a vertical tower emerging from a horizontal base. This base is at grade and contains the principal living spaces of the house including the living, dining and bedrooms. Also there are three courtyards of various scales and a large outdoor space containing a pool and terrace. The tower becomes a carefully perforated element on the south side bringing in points of light into the two story living volume. A second floor loft overlooks the living space below and continues up to an outdoor room that contains one interior space called the "shipyard". The owner builds highly detailed model ships and this becomes workspace for these constructions. The "shipyard" opens in both directions out into the outdoor rooms and light comes in from the open sky above, perforations on the south wall and from the outdoor room projections for selected views. Access is provided by a stairway to the roof of the "shipyard" to a roof terrace with a small convenience bar for exceptional views of the bay, downtown Sarasota and the bridge to the barrier islands. Within the tower, the registration of the top of the perforations conforms with the ceiling heights within the house and this is strengthened by the use of color (blue to mirror the sky) on the inside of these openings and continuing as the interior ceiling plane color. **Builder:** Dean Thompson, DTI Contracting. **Architect:** Guy Peterson. **Interior Designer:** David Lowe Interior Design. **Photographer:** Greg Wilson.

JUDGE COMMENT "Sculptural livable and exciting building that suits its site very well . . . Great interior 'moments', materials and spatial quality."

GOLD

2014 BEST OVERALL HOME/
UNDER \$2 MILLION

SEAGRAPE WEEKEND RETREAT **TRACTION ARCHITECTURE**

The Seagrape House is a weekend retreat on the Gulf of Mexico. The home was designed to be a gathering place for multiple generations of an extended family. Situated on a barrier island, the shape of the site shifts with each passing storm. During the course of the project, dunes emerged and multiplied, and the distance between the house and the coastline more than doubled. Architects conceived of the house as a physical anchor along the blurred edge between land and sea—a tool to understand the landscape and one's place within it. Permanence is expressed by selectively exposing the home's poured concrete construction which resists hurricane forces and enables dramatic cantilevers. Livable spaces are elevated on concrete columns to protect the home from storm surge and to allow the dune vegetation to meander below. A megaphone-shaped deck is subtracted from the volume of the building to amplify the sound of crashing waves. Small details, such as an aluminum line inlaid into the concrete floor orient you due West, and carvings in the cypress wall cladding triangulate your position across the Gulf of Mexico to Tulum and Veracruz, a nod to distant civilizations. A time capsule containing family mementos was cast into the concrete shear wall, reinforcing the notion of the house as a constant as time passes and children grow. The home's wedge-shaped form was derived from the desire to achieve both volumetric and thermal efficiency while maximizing views of the Gulf. Bedrooms were envisioned as spaces of quiet respite with cypress built-ins that frame the sea to promote contemplative study. Photovoltaic panels provide the bulk of the home's energy needs. The Seagrape House is the first LEED Platinum certified home on Anna Maria Island. It was recently awarded a Design Honor Award from the American Institute of Architects, Tampa Bay Chapter. **Architect:** Traction Architecture. **Builder:** Whitehead Construction. **Photographer:** Moris Moreno.



2014 BEST OVERALL HOME/
UNDER \$2 MILLION

SILVER



LOMA LINDA RESIDENCE **DSDG, INC. ARCHITECTS**

Clean linear design permits an ample degree of openness towards the exterior landscape in this one-story modern home. Located west of the Trail, the scale, shape and presentation to the street and neighborhood have been created to make the home adapt to its surroundings. The goal of the design is to create a house that is warm and modern with the use of white walls, glass, wood and concrete. The home is family and guest friendly, with quiet private spaces as well as large entertaining areas. Creating the drama of arrival at the entry is accomplished through a landscape lined motor court and angular garage followed by the inviting wood-clad front entry which creates a modern port hole to the home framing the entry doors. As you enter the home, the great room opens to the nature of the backyard and pool with 11-foot-tall movable walls of glass that open the great room from floor to ceiling to the outdoors. This great room is made up of kitchen, living room, dining room as well as outdoor family and dining room. The views out of the house were framed by the architecture and landscaping, and is focused on the pool with in-pool island conversation and fire pit area. The outdoor space and smaller intimate setting rotate around the pool, making it the focus. The main house is 2,500 square feet split plan with master suite on one side and an additional two bedrooms on the opposite side of the central great room. The pool cabana - guest suite is 500 square feet for a total of 3,000 square feet. **Architect:** Mark Sultana, AIA, DSDG Inc, Architects. **Builder:** Ampersand Construction, LLC. **Photographer:** Detlev von Kessel.

JUDGE COMMENT *"Interesting cluster of volumes, great integration with the outside."*



PLATINUM

54th WEST RESIDENCE

SAWA DESIGN STUDIO / LEADER DESIGN STUDIO

The design concept for this extensive townhome renovation was to create a timeless and elegant light-filled home suitable for entertaining. The renovation features the kitchen as the focal point of the first floor. The original design featured a small dark kitchen, low ceilings and angled walls. Poorly located walls blocked natural daylight from reaching the kitchen. The renovation stripped the home to its studs, removed many walls and low ceilings and unified the living, kitchen and dining spaces. The kitchen's centerpiece is a new 16-foot long island with an integrated breakfast bar. By relocating the appliances, pantry, and full height cabinets to a new 24-foot long storage wall that abuts another unit, the center of the home was able to be open, clutter free and allow a connection between the kitchen, living room and dining spaces. A 7-by-7-foot piece of frosted glass serves as a divider between the kitchen and the entryway to allow natural light to reach the kitchen while maintaining privacy. The kitchen features elegant and timeless materials assembled with clean, unembellished details. The perimeter of the kitchen features white painted cabinets and white quartz countertops that highlight a Calcutta marble backsplash and back-painted glass upper cabinets. The island is wrapped in gray zebrawood and a dark quartz countertop to visually reinforce it as the focal point of the space. Light colored walls and cabinets reflect natural light and further the sense of openness. Concrete pendant lights anchor the island and a recessed light cove washes the storage wall in a soft light. The result is a timeless and elegant kitchen that serves as the focal point of this home. **Kitchen Design:** SAWA Design Studio / Leader Design Studio. **Architect:** Leader Design Studio. **Builder:** J.M. Meyer Construction. **Photographer:** SRQ 360.

JUDGE COMMENT "Beautiful kitchen, nice materials, functional and timeless. . . Well composed and quiet."





THE PEARL **JOSH WYNNE**

The Pearl is an amazing home that lives without compromise. The clean lines and simple beauty inspired by South Pacific style architecture is blended seamlessly with the Florida Cracker vernacular that the area is known for. Once inside, your eyes are drawn through the length of the connected common spaces by large, exposed pine ceiling trusses contrasted by painted ceilings. At one end of this great room is a magnificent chef's kitchen. The kitchen is designed adjacent to the open dining table and the 1,200 square foot porch, which is home to the outdoor kitchen. Behind the main kitchen is a massive pantry and catering prep kitchen accessible directly from the garage. The kitchen cabinets are custom made from FSC certified coconut palm wood. The drawers are all made from FSC certified bamboo. The heart of the kitchen is the eat-at-bar made from 2 ½-inch thick concrete. The seamless top is nearly 16 feet long, featuring an integral drain trivet and is self-supporting on two waterfall legs. All of the decorative lighting was custom designed and built to work with the large exposed trusses. The Pearl is a gem in the neighborhood of Oyster Bay. The subtle beauty of this home is punctuated with LEED Platinum, and FBGC Platinum certifications proving that beauty and sustainability can co-exist in a single experience ideal for entertaining small groups or large gatherings. **Architect and Builder:** Josh Wynne. **Photographer:** Ryan Gamma.

JUDGE COMMENT "Exquisite design in terms of function, restraint, materials, fixtures and integration with remaining living space . . . One of my favorites, the use of green materials like concrete and bamboo in a very stylish way is refreshing . . . It's functional. It's dynamic but not overdone. It's highly detailed in a subtle but delightful way."



POINT OF VIEW

EUROTECH CABINETRY

Almost every room of this penthouse apartment enjoys a commanding view of Sarasota Bay- except the kitchen. Aside from the lack of windows, the original “traditional” kitchen had darker finishes, boringly plain soffits, tall cabinets and return walls bracketing the entries and a high bar making the whole space feel cramped. The appliance arrangement was less than inspired. A wet bar at the back of the space that required users to face an interior wall was uninviting and consequently unused. More significantly, the new owner’s tastes are decidedly contemporary and lean toward visually bold statements. A total renovation opened up the space by removing the soffits and return walls. Cabinetry with a row of illuminated screen glass “windows” at the ceiling adds storage, visual interest and height. Wine storage added to the family room freed up the back wall for a bank of tall cabinets organized to store a plethora of pantry goods, small appliances and party serveware. A microwave drawer brings convenience and functionality to the island that includes seating for two. The large, commercial-style refrigerator and dual wall ovens are particularly helpful for large gatherings. The peninsula includes a large, single bowl sink and two dishwashers making food prep a clean up after parties easier. The contemporary feel of the flush, European-style cabinetry is enhanced by a high gloss finish and gleaming stainless steel appliances that help brighten the space. A thoughtful, layered lighting plan allows for a variety of moods. The neutral tones and straight grain of the natural Tay veneer cabinetry provide the perfect canvas for the high drama of the highly figured “Magma” granite. The granite splash reads as art behind the new induction cooktop making the area a focal point. The high bar was eliminated, replaced by an expanse of counter-high granite that invites family and friends to gather at a comfortable and convenient height. Magnificent wood flooring flowing throughout ties the kitchen to the adjacent family room making both spaces feel larger. The entire orientation of kitchen is now shifted toward the family room and fabulous view beyond. **Kitchen Designer:** David Asher, Eurotech Cabinetry. **Builder:** Anthony Girard. **Interior Designer:** Sally Trout. **Photographer:** Tom Harper.



SILVER

JUDGE COMMENT “Rich and warm. Seamlessly blends with living space.”

SARASOTA BAY TRANSFORMATION **STUDIO FOR MODERN ARCHITECTURE**

The existing residence was cut off from exceptional views of Sarasota Bay. The house also lacked an access to the bay from the living areas. The renovation and addition opens the house up for the views and connects to the bay with a 12-foot wide exterior stair carved out of the existing plinth. The interior of the existing house was centered on a cavernous double height space lit by series of high square windows. The addition adds a mezzanine level, an interior stair, and a dining wing. The renovation also adds a generous shaded porch on the bayside. A double height shaded window is created to offer views to the bay from both the main and mezzanine levels. A new glass bridge extends through the width of the house from the entry foyer to a balcony projecting into the bay porch. A two-story storage wall separates a stair leading to the mezzanine from the living space. Built-in white and glass bookcases for the storage and display of the owner's colored glass collection are accessed from the glass bridge which is supported by an exposed steel structure. The main beam slices through the two story storage wall without touching it. Sixteen feet of sliding doors pocket to open up the living to a porch on the water. The roof spans a full 30 feet over the elevated pool framing the views over the bay. The angle of the porch ceiling directs the view down to the water. Two cuts in the same roof turn the large porch into a spatial sundial. The sun also reflects onto the pool and bounces light back onto the ceiling of this exterior volume. Ceiling and walls frame the views to the site, with only a delicate steel column holding its corner. **Architect and Builder:** Halflants and Pichette, Studio for Modern Architecture. **Photographer:** Greg Wilson.

JUDGE COMMENT *"Strong sculptured spaces but don't know what is past and what is present . . . This white building contrasts with the surrounding landscape with a purity of form and layering. It has complexity and ambiguity, like paper folded into walls. The white will be ever-changing with the sunlight . . . Thorough, rigorous, and beautifully detailed."*





2014 BEST REMODEL/
RENOVATION



GOLD

LIGHTHOUSE POINT **DSDG, INC. ARCHITECTS**

Although the beautifully designed three-story modern house on Lighthouse Point was built in 2000. Some of the finish selections were far from desirable and aged the look of the house. The master bathroom needed the most attention. Travertine tile covered the bathroom floor, shower walls and even extended out past the shower glass to cover the whole back wall. Square white porcelain tile consumed the large and acquired tub deck that took up most of the floor space in the room. The client requested a modern and luxurious bathroom that fit the design of the building and did not compete with the glorious view of New Pass. The overall design layout of the bathroom remained the same only the finishes, fixtures, and cabinetry were updated. The existing drop in tub was replaced with a new free standing whirlpool tub that is now not only a place to relax and look at the water but is itself a piece of art. The travertine floor was replaced with a tile that mimics the look of wood but still compliments the travertine that was left on the wall behind the free standing tub. The once bulky white vanity with rope light located at the toe kick is now a sleek black floating vanity with touch latch drawers. The TV that once was placed on top of the vanity is now hidden behind the vanity mirror to hide it from immediate view and minimize clutter. New sleek modern vessel sinks are accompanied with minimalistic faucets that are attached to the wall. **Architect:** Mark Sultana, AIA. **Builder:** Vandyk Group of Companies. **Interior Designer:** April White. **Photographer:** Mark Sultana.

JUDGE COMMENT *"In this day and age, calm and quiet are difficult to find. This renovation provides just such a retreat."*

JUDGE COMMENT "A much lighter and brighter home after renovation . . . The restoration erases many of the additional "crimes" perpetrated on the original building."

SILVER



NORTH TRAIL RENOVATION **THE SCHIMBERG GROUP**

Located in an exclusive, gated community north of the city of Sarasota, this residence benefits from a peninsula-like setting, which provides breathtaking views of Sarasota Bay to the north and south. The Schimberg Group transformed the originally ill-proportioned Med Rev home into a contemporary, elegantly functional family abode. The project began with replacing existing windows with impact resistant glazing and evolved into renovating the entire house to meet the needs of an active family of five. By changing most of the disproportionate windows, choosing a new rich, gray slate roof and altering the scale of the columns and front entry, the exterior took on a stately presence. The new modern rectilinear pool features a sun shelf and a connected spa; surrounded by zoysia grass, it appears to float in the yard and flow into the adjacent bay. The interior was essentially gutted and every room was redesigned, resulting in a loft-like living space with 10-foot high windows spanning the entire back wall. Upon entering the main floor from the grand stair, the resident is welcomed by a full view of Sarasota Bay through 40 feet of windows and doors, reminiscent of the original design, but reworked to give the space a more urban, beautifully lit interior. The kitchen is a real dream for a chef and smartly blends crisp, sleek white materials with rich, dark woods and accents of bright red. The entire house is now functional, thoughtfully detailed and has the one-of-a-kind feel the clients were looking to achieve. **Architect:** Barron Schimberg. **Builder:** Stellar Construction. **Interior Designer:** Patty Schimberg. **Photographer:** Greg Wilson.

SIESTA KEY RESORT **MICHAEL A. GILKEY**

The concept for this dramatic renovation was to transform two Siesta Key residences, a home and historic guest house, into one cohesive experience, maintaining the privacy of each structures while bringing the users together in the shared experience of a relaxing pool courtyard and breathtaking oceanfront views. The critical challenge in executing this concept lied within the orientation of the properties. The main residence had a Beach Road driveway abutting the Gulf of Mexico; the guest house entry was on the opposite side of the property, off an interior Siesta Key roadway. The spectacular Gulf frontage was grievously downplayed by the siting of main house's driveway and entry sequence on the ocean side. Further, the two residences were harshly separated by a fence and vegetation. Our solution was to completely redesign the circulation of the property and join the two structures by creating a courtyard retreat aesthetic, centered around their shared swimming pool. The existing oceanfront driveway and divisive fence and vegetation were removed. The main entry of the home was reoriented inward toward the courtyard. The existing pool was refinished with striking blue glass tile to pull the user's view toward the Gulf, and to unite both homes in celebration of their joined approach toward the sea. A new fencing system with two arbor-covered gates now encourages entry to both the main residence. What was once a confusing and obtrusive front entry sequence abutting the ocean is now an outdoor lounge with a breathtaking 180 degree view of the Gulf of Mexico. Although the oceanfront home remains prominent and the historical home is the obvious guest house, both spaces now boast welcoming entry experiences, and enjoy an equal sense of belonging to both pool courtyard and beach. **Landscape Architect:** Michael A. Gilkey, Inc. **Photographer:** Max Kelly.

JUDGE COMMENT *"Spectacular in its simplicity and reservation. Beautiful contemporary expression of Florida's '60s . . . This project successfully exercises a great deal of restraint to great effect. It quietly and beautifully sets the stage for outdoor life in a beautiful setting."*



JUDGE COMMENT *“Art in the forms of walls, water and light. I hope people understand that “landscape” is not restricted to plants . . . Challenging narrow space to work with. Functionally, space is very effective under cover and at pool entry.”*



HARBOR ACRES **DWY LANDSCAPE ARCHITECTS**

Located in Harbor Acres, this understated and somewhat non-descript vernacular house sits comfortably adjacent to newer “McMansions” that line the waterfront within one of Sarasota’s oldest and most popular neighborhoods. Although the owners had a great appreciation for the understated quality of their home – they only relished the interior spaces which had been updated with an open floor plan and modern aesthetic. Alternatively, the exterior of the home was lacking both function and style. The renovated landscape design creates exterior spaces that are an extension of the home, correspond with the interior’s modern aesthetic and support the family’s active lifestyle. Conceived as a modern pool environment, the backyard space provides the owners a space to gather with friends and family to unwind and enjoy myriad of activities while watching the sports on two TVs within the cabana. This multi-purpose space contains a fifty-five foot pool designed for swimming laps, playing volleyball and basketball or lounging on the sun-shelf. Immediately adjacent is a sunken spa accentuated by a large water-wall with LED lighting for evening entertainment. The pool deck allows room for meditation, table tennis, billiards and casual dining under the re-styled cabana. The grill is tucked out of sight behind the cabana wall but within the screen enclosure. An expanded dog run in the side yard just beyond the grill area provides new space for the family’s pets. The two-story enclosure was designed for minimal visual impact with maximum functionality, creating an extension of the interior by allowing the house to be opened up without the threat of bugs and wildlife from entering. The goal was not only to satisfy the program requirements on a limited site, but also to do so in a dramatic and memorable way that fit the owner’s lifestyle. **Landscape Architect:** DWY Landscape Architects. **Interior Designer:** David Lowe. **Photographer:** Greg Wilson.

JUDGE COMMENT "One has to accept an Asian garden attached to a European structure to review the project, but once that is done, the project hangs together quite well. I enjoy the movement from the rustic stonework to the refined pagodas . . . Truly beautiful and elaborate."

SILVER

2014 BEST LANDSCAPE

CASEY KEY PAGODA GARDEN **MICHAEL A. GILKEY**

The Casey Key Pagoda Garden overlooks Blackburn Bay on Casey Key, an exclusive barrier island with a single narrow roadway. The owners' home is across the street from the Garden. Prior to renovation, Bay views were obstructed and the site was overgrown. The challenge was to meet the owners' cultural and environmental needs while framing views and offering spaces that would meet both public and private gatherings. The solution was to appropriately site three destinations—the Rose Garden, the Conservatory, and the Chinese Garden—and, through creative material repetition, to make the garden feel contiguous with the home. The Pedestrian Terrace and Rose Garden, inspired by the owners' travels, were dictated by the home's strong axes. The transition to the Conservatory is created through the Arbor and Edible Garden. The Conservatory hides a cistern below that collects more than enough rainwater to irrigate the site. Behind the Conservatory lies the Bamboo Garden and Meditation Deck. The Chinese Garden is entered through a traditional Moongate. The rocks throughout the Garden create points of focus and frame water elements without obstructing views. Three pavilions anchor the space, connected by walkways with seatwalls. The pavilions appear to be built of wood, but are poured-in-place concrete to withstand Gulf winds. Beneath them is a koi pond and refugium, giving the structures a floating appearance. A second Moongate takes one out of the Chinese Garden and onto a deck overlooking the bay. All design decisions insist on cohesion and consciousness of the project's Gulfcoast context. This project was made possible by true collaboration between landscape architect, building contractor and owners. The landscape architect designed all elements of the project, engaging in constant structural guidance from the building contractor. Together they developed innovative solutions and assembled a team of craftsmen that informed their design-build process. **Landscape Architect:** Michael A. Gilkey. **Building Contractor:** Joe Jannopoulo, Synergy Building Corp. **Photographers:** Greg Wilson.

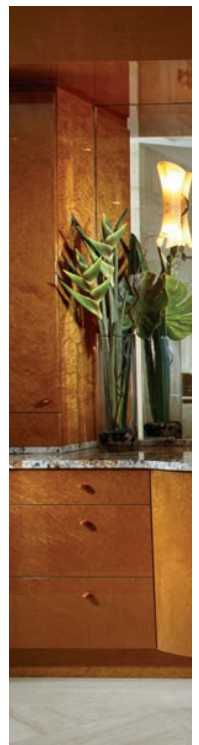


PLATINUM

SPACIOUS TRANQUILITY **DSDG, INC. ARCHITECTS**

Clean linear design permits an ample degree of openness towards the exterior landscape in this one-story modern home. Located west of the Trail, the scale, shape and presentation to the street and neighborhood have been created to make the home adapt to its surroundings. The home is family and guest friendly, with quiet private spaces as well as large entertaining areas. As you enter the home, the great room opens to the nature of the backyard and pool with 11-foot tall movable walls of glass that open the great room from floor to ceiling to the outdoors. This Great room is made up of kitchen, living room, dining room as well as outdoor family and dining room. The main house is 2,500 square feet split plan with master suite on one side and an additional two bedrooms on the opposite side of the central great room. The pool cabana - guest suite is 500 square feet for a total of 3,000 square feet. The master bathroom in this 2,500 square foot house is just the right amount of tranquility and peace of mind. A floating vanity allows for access from more than one side. The vessel sinks are made of frosted glass over which is a custom floating mirror to reflect without being grounded. Hanging pendant lights on each side of the vanity reflect in the mirror to emanate more light in a smaller space. A drop-in whirlpool tub allows for total relaxation while sipping on a glass of wine, and a stand-up glass walled shower opens up to the private outdoor tranquility garden, consisting of potted plants to bring nature into the space. **Architect:** Mark Sultana, AIA. DSDG, Inc. Architects. **Builder:** Ampersand Construction, LLC. **Photographer:** Detlev von Kessel.

JUDGE COMMENT "Creative simplicity and zoning of spaces."





2014 BEST BATHROOM



NORTH TRAIL BATH RETREAT **THE SCHIMBERG GROUP**

GOLD

After fully exploring all of the options regarding working with the existing master bathroom, we agreed that in order to truly maximize the space's potential, the design would necessitate gutting it completely. The primary focus, the spectacular bay view, became the driving force of the design. By centering an elegant, egg-shaped floating tub on an oversized, picture frame window, the space feels like an oasis on a tropical island. The meticulously selected marble flooring, vanity tops and classic white cabinetry, accented by eggplant, silver and sand tones, give the space a sophisticated, refined sense of calm. In one corner is a softened, upholstered window seat. In the opposite corner is an identically proportioned, angled vanity, dropped in height, to provide an elegant and useful seated vanity spot. The exceptionally, spacious glass enclosed shower has every current plumbing accessory; however, by carefully placing each fixture and coordinating it with the wall tile pattern and placement of the unique glass accent tiles, it all works harmoniously. Mission accomplished: every moment of the bathroom's design, particularly the shape and orientation of the unique shower and tub, allows the resident to constantly be showered with daylight and literally "soak in" their extraordinary views of the bay. **Architect:** Barron Schimberg, The Schimberg Group. **Builder:** Stellar Construction. **Interior Designer:** Patty Schimberg. **Photographer:** Greg Wilson.

JUDGE COMMENT
"Beautiful... This bath is functional."

WARM CONTEMPORARY **EUROTECH CABINETRY**

JUDGE COMMENT "Beautiful, the craft and attention in the case-work and millwork is exquisite."

SILVER



The owners of this Master Bath renovation project prefer clean, contemporary lines and clutter-free living. Minimal storage furniture in the adjacent master bedroom meant the master bath would function as a dressing area as well. A large unused corner tub in the original bath was removed adding to the clear floor area, which visually expands the space. At almost 9 feet, the ceilings were too high for functional cabinetry. Eschewing traditional drywall bulkheads, a new raised soffit of matching veneer tops the cabinetry and houses overhead lighting. The sleek lines and glossy finishes are decidedly contemporary. The look is softened by the gentle curves of the lavatory cabinets and warmed by the selection of an exotic, ginger stained birdseye maple for the cabinetry and neutral stone for floors and amber-veined countertops. Both stimulating and relaxing, the result is a great space to begin and end each day. **Bathroom Design:** Eurotech Cabinetry **Builder:** Anthony Girard. **Interior Designer:** Sally Trout. **Photographer:** Tom Harper.